



Various events take place inside the mound shaped visitor's centre.

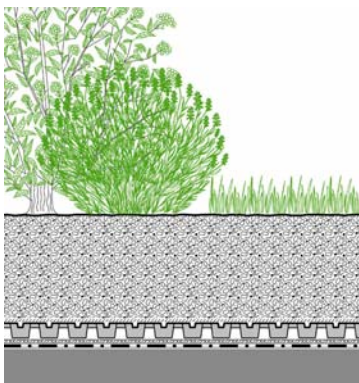
### Conception

With its 20 ha of area the "Al Shaheed Park" is the largest city park in the country. It was mainly built to protect the city from sandstorms and to reduce air pollution. In addition, the park is meant to commemorate the victims of the first Gulf War, "Al Shaheed" means "Park of the Martyrs".

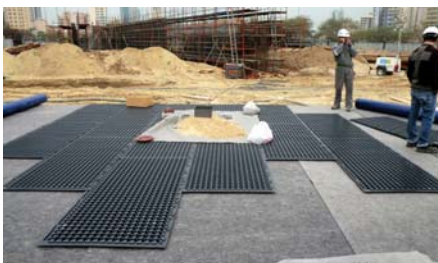
As part of the redesign an artificial lake was situated in the centre of the park. This feature is not only a landscape

element, but also serves as a water reservoir during the hot season. The park accommodates two museums, a visitor's centre, an underground garage with 800 parking lots, restaurants and shops. In order not to interrupt the continuous park character, most of the buildings were equipped with an accessible green roof. Despite the well-chosen vegetation these still need to be irrigated.

### System Build-up on the Underground Garage



- Plant layer
- System Substrate
- Filter Sheet TG
- Stabilodrain® SD 30, infilled
- Protection Mat ISM 50
- Roof construction with root resistant waterproofing



Stabilodrain® elements applied on the approximately 15,000 m<sup>2</sup> of ceiling surface of the underground parking provide a stable base for green areas, paths and seating. Gaps in the water basin allow for natural illumination of the garage and water features provide cooling.



This aerial photograph shows the Al Shaheed Park, which is meant to provide a cross-over from the old city of Kuwait to the modern business centre of Kuwait City.



The visitor centre is visible in the upper left corner and the administration building in the lower right one; An artificial lake is situated in between.



A green roof as part of the "Habitats Museum" where the focus is set clearly on Kuwait's nature.

